

Please rate this document after reviewing at the bottom of this page.

## REPLACEMENT

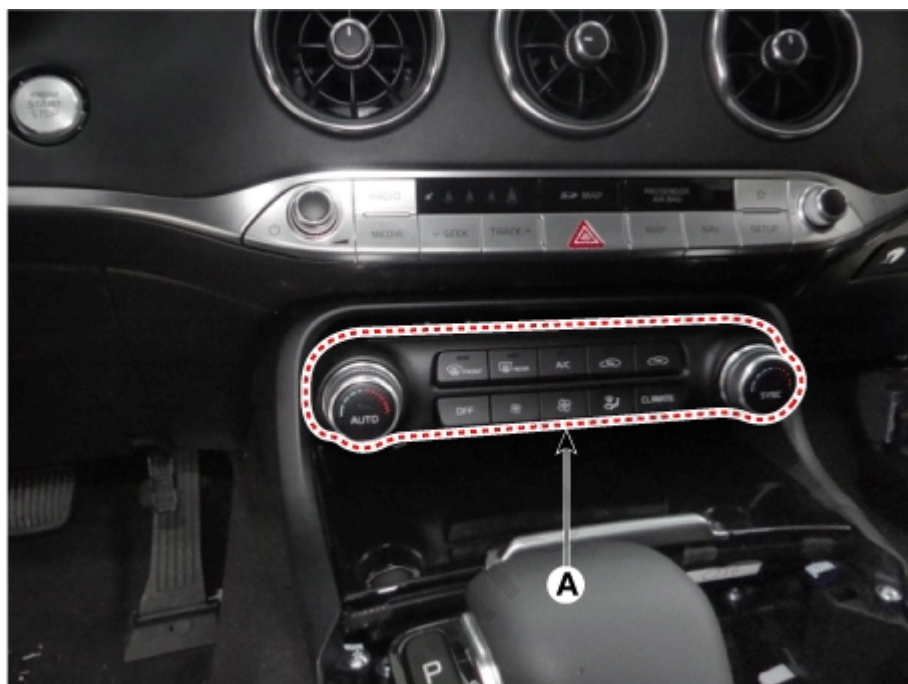
### ⚠ CAUTION

Put on gloves to protect your hands.

### NOTICE

- Use a plastic panel removal tool to remove interior trim pieces without marring the surface.
- Take care not to bend or scratch the trim and panels.

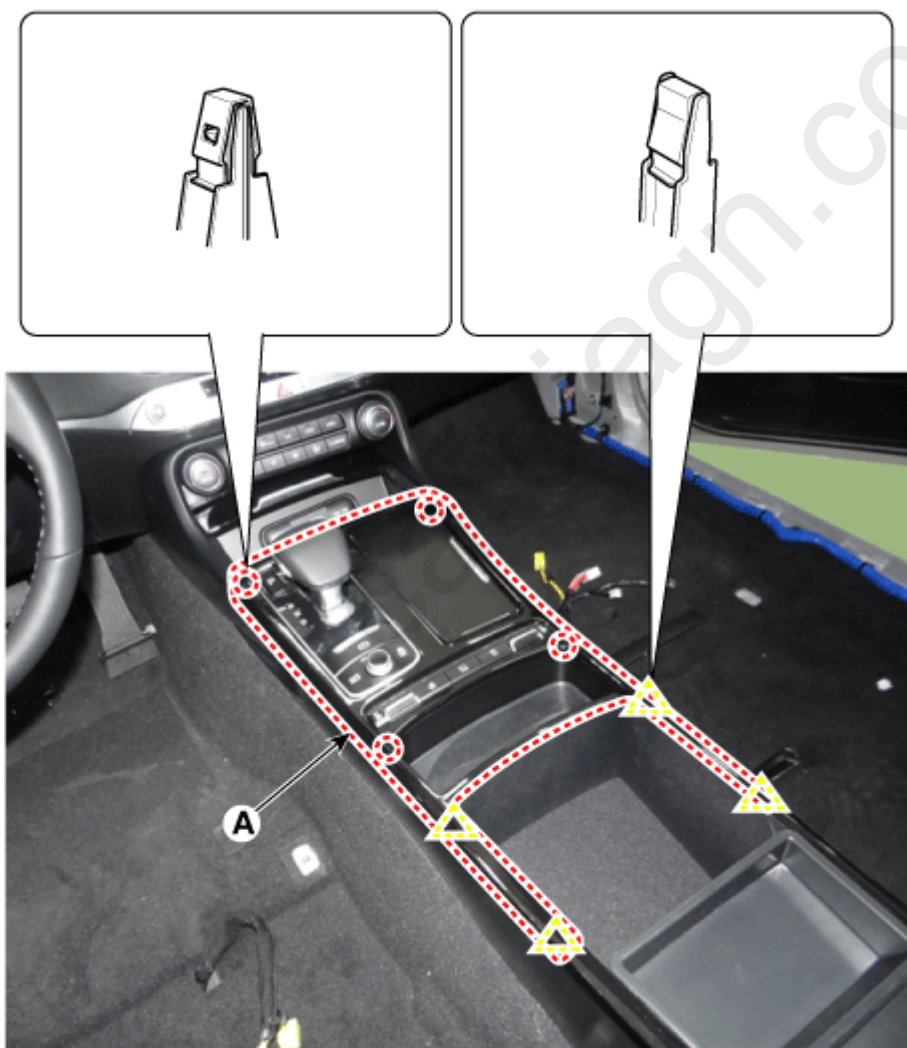
1. Separate the heater control unit (A).



2. Remove the heater control unit after disconnecting the connector (A).



3. Remove the console upper cover (A) by using a remover.



4. Remove the console upper cover after disconnecting the console upper cover connectors (A).



5. Remove the console storage box small tray (A).

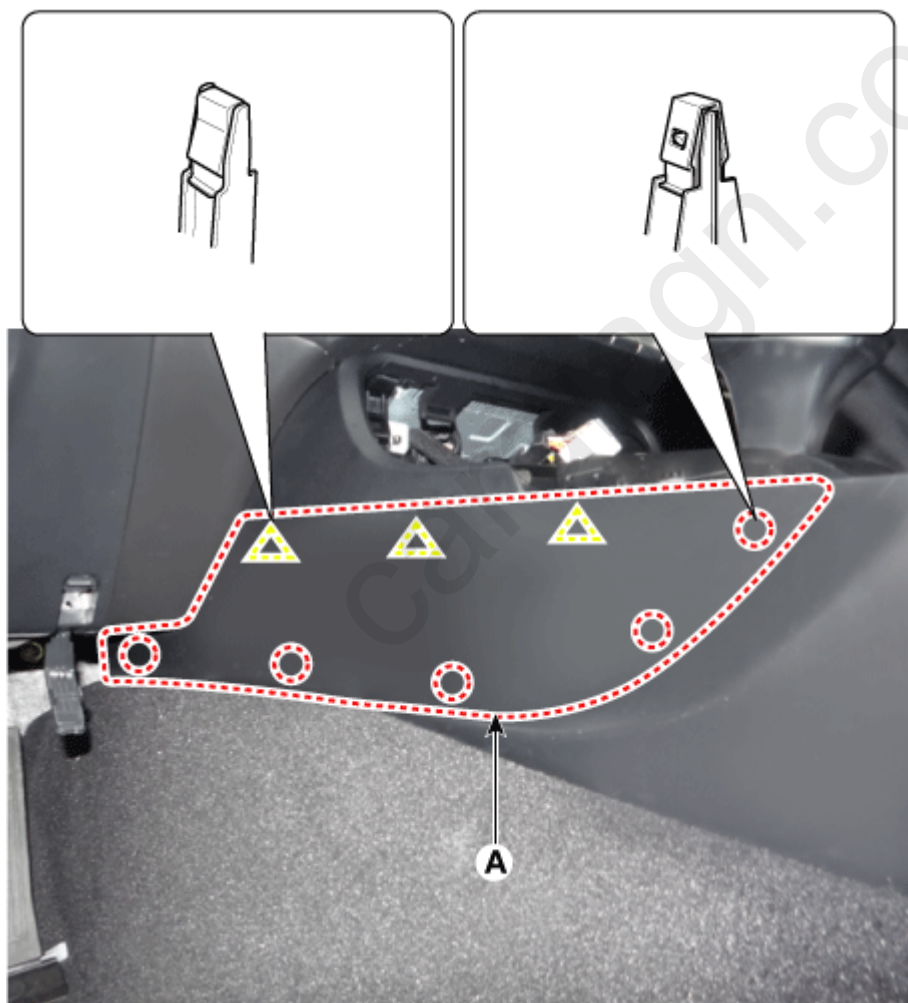


6. Remove the console storage box mat (A).

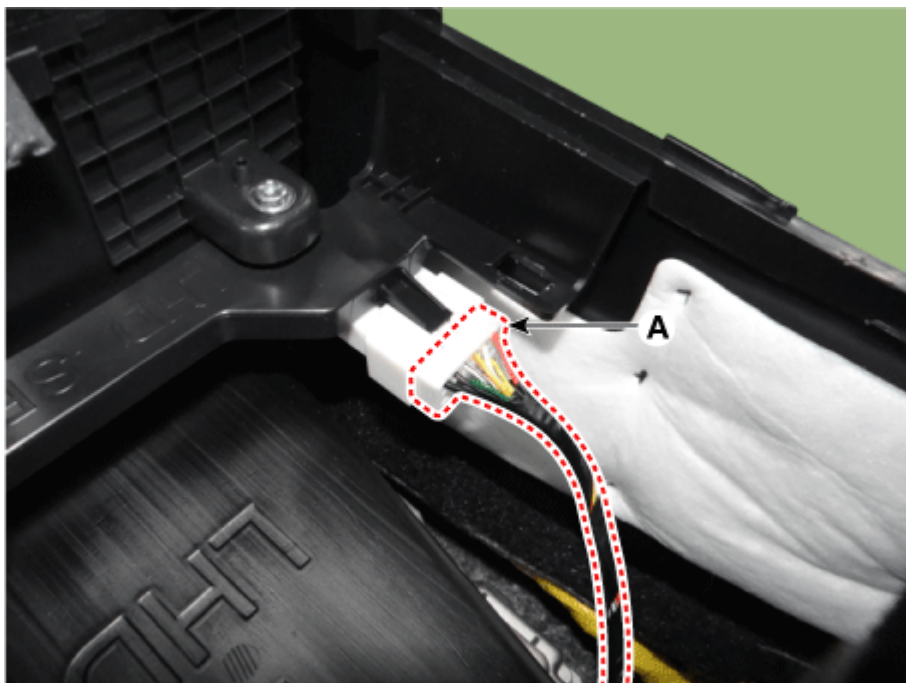




7. Remove the console side molding (A).



8. Disconnect the console upper side extension connectors (A).



9. Disconnect the electronic shift lever connector (A).



10. Disconnect the console lower side extension connectors (A).

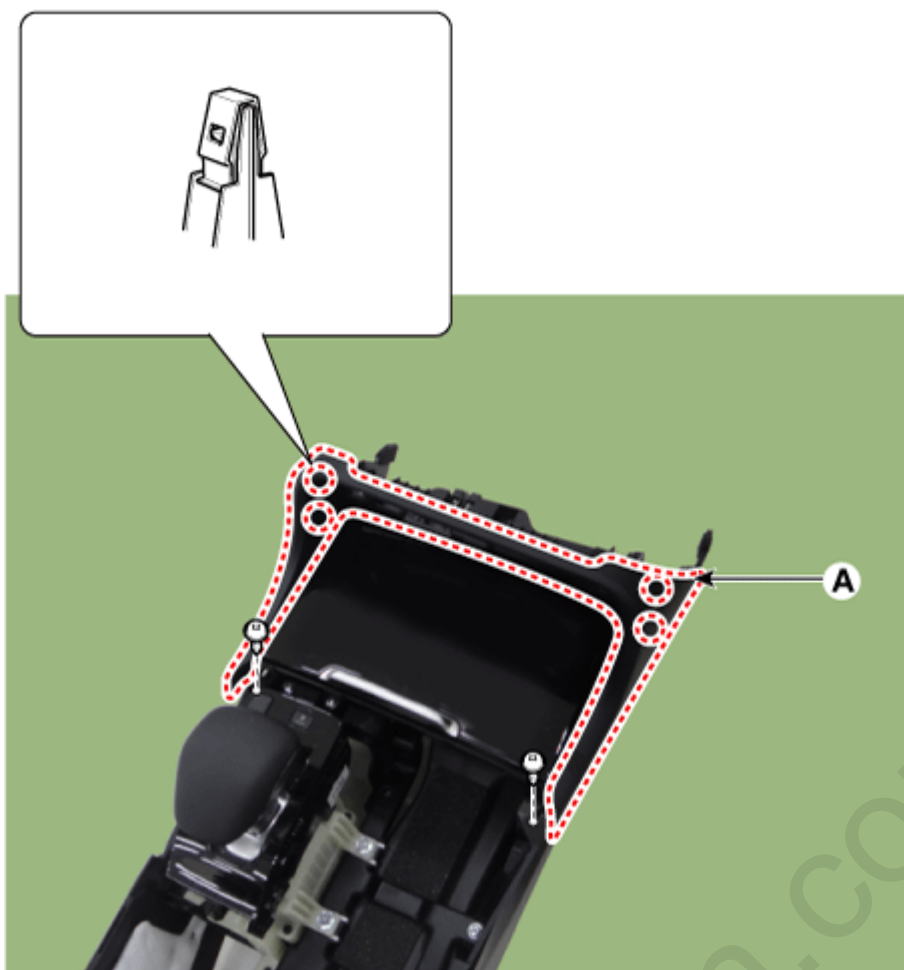


11. Remove the console assembly (A) after loosening the mounting bolts.

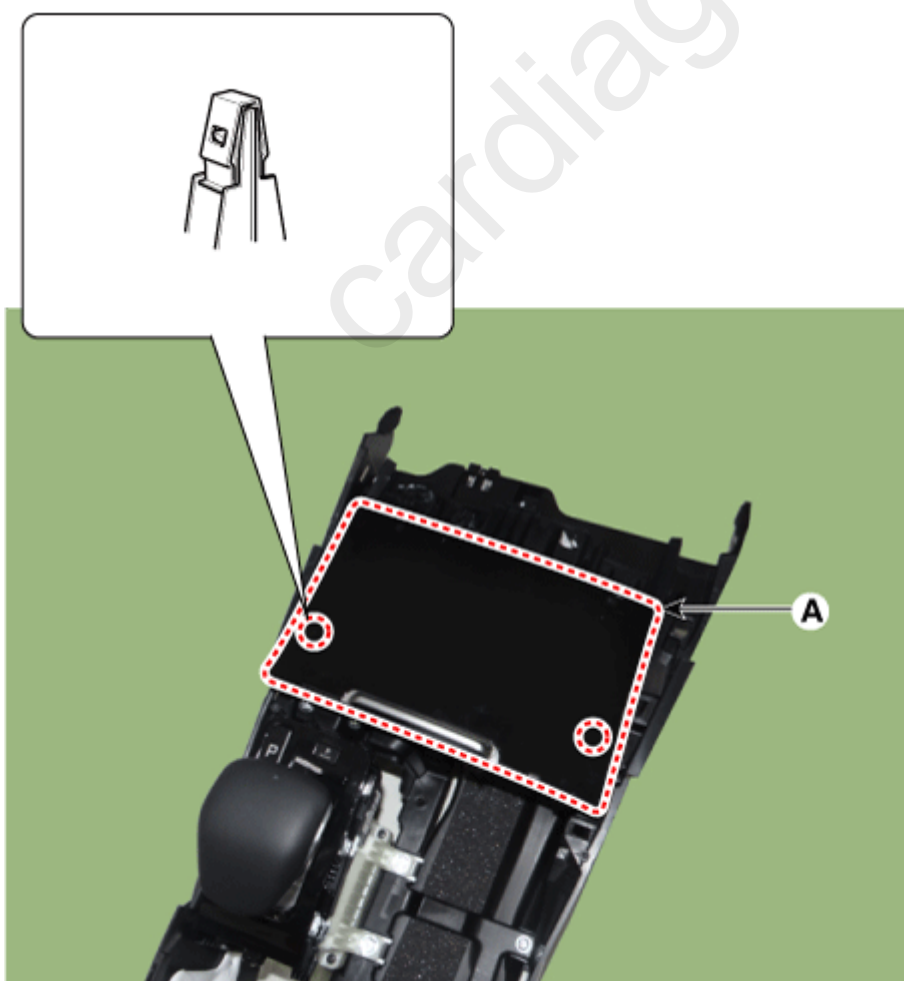


12. Remove the console front cover (A) after loosening the mounting screws.



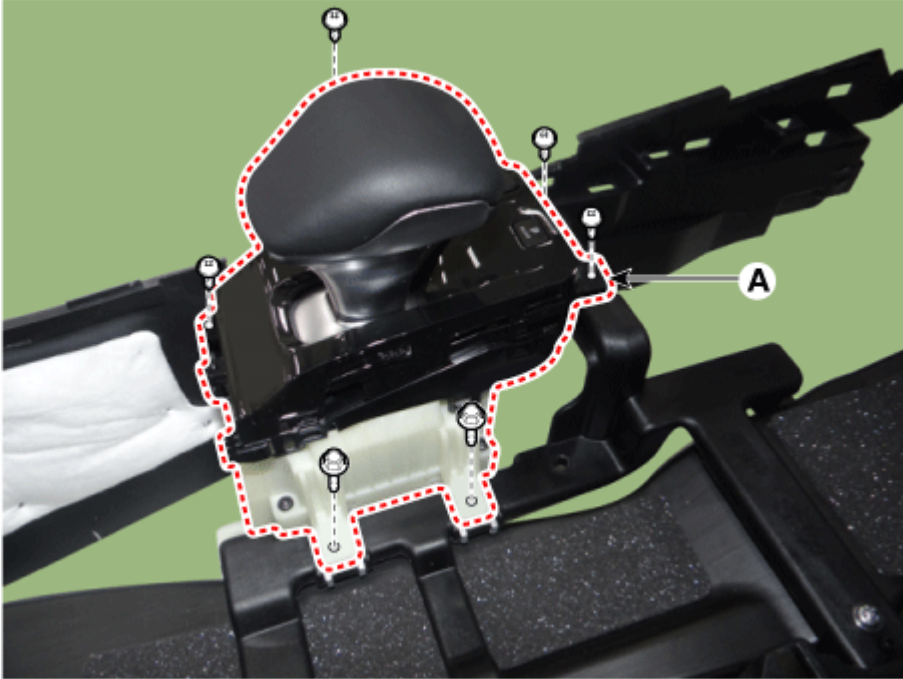


13. Remove the console tray(A).



14. Remove the electronic shift lever (A) after loosening the mounting bolts & screws.

English



15. Install in the reverse order of removal.

**i Information**

- Make sure the connector are connected in properly.
- Replace any damaged clips.

**\* Thanks for your cooperation for the more quality. Please surely rate this document before closing.**